

FOR LEASE

TYRONE TOWER



**AVAILABLE SUITES:**

**103 2,169 SF**

**406 1,593 SF**

**501 1,742 SF**

**305 2,175 SF**

**404 839 SF**

**506 3,557 SF**

**Office Space Available**

**1700 66<sup>TH</sup> Street North  
Saint Petersburg, Florida 33710**



**VECTOR**  
COMMERCIAL REAL ESTATE



Blakemore Kearney  
BKearney@Vectorrealty.com  
727-455-5150



Ned Willis  
NWillis@Vectorrealty.com  
727-481-3356

www.VectorRealty.com  
125 5<sup>th</sup> Street South Suite 201  
Saint Petersburg, Florida 33704  
727-823-1230

# EXECUTIVE SUMMARY

Tyrone Tower is a five-story, 72,079-square-foot Class B office building located at the signalized corner of 66<sup>th</sup> Street North and 18<sup>th</sup> Avenue North, offering excellent visibility, signage opportunities, and exposure to approximately 39,000 vehicles per day. The property is well-suited for professional, medical, and service-oriented users in a high-traffic commercial corridor.

The building has received over \$1 million in capital improvements since 2020, including new HVAC systems, a new roof, a remodeled lobby, updated restrooms, and additional planned renovations. These upgrades position Tyrone Tower as a well-maintained office asset within St. Petersburg.

Amenities include secure access, 24/7 tenant entry, controlled building access, a day porter service five days a week, and ample on-site parking.

The property is located near Tyrone Square Mall, medical offices, major retailers, and dining options, and is adjacent to a Publix-anchored retail center. Restaurants, fitness centers, and daily services are within walking distance.

Tyrone Tower supports multi-tenant occupancy with a diverse mix of medical and professional users, flexible floor plans, and multiple built-out suites available for immediate occupancy. Recently acquired by Posterity Real Estate Holdings in late 2025, ownership is actively investing in the property with a focus on continued improvements while maintaining competitive lease rates



## LOCATION

1700 66<sup>th</sup> Street North  
St. Petersburg, FL 33701



## LEASE RATE

\$25 PSF Full Service



## UPDATES

New HVAC, restrooms,  
lobby, and roof



## PARKING

On-site parking  
361 total spaces



## TRAFFIC COUNT

39,000 VPD

# 1700 66<sup>TH</sup> Street North



**VECTOR**  
COMMERCIAL REAL ESTATE

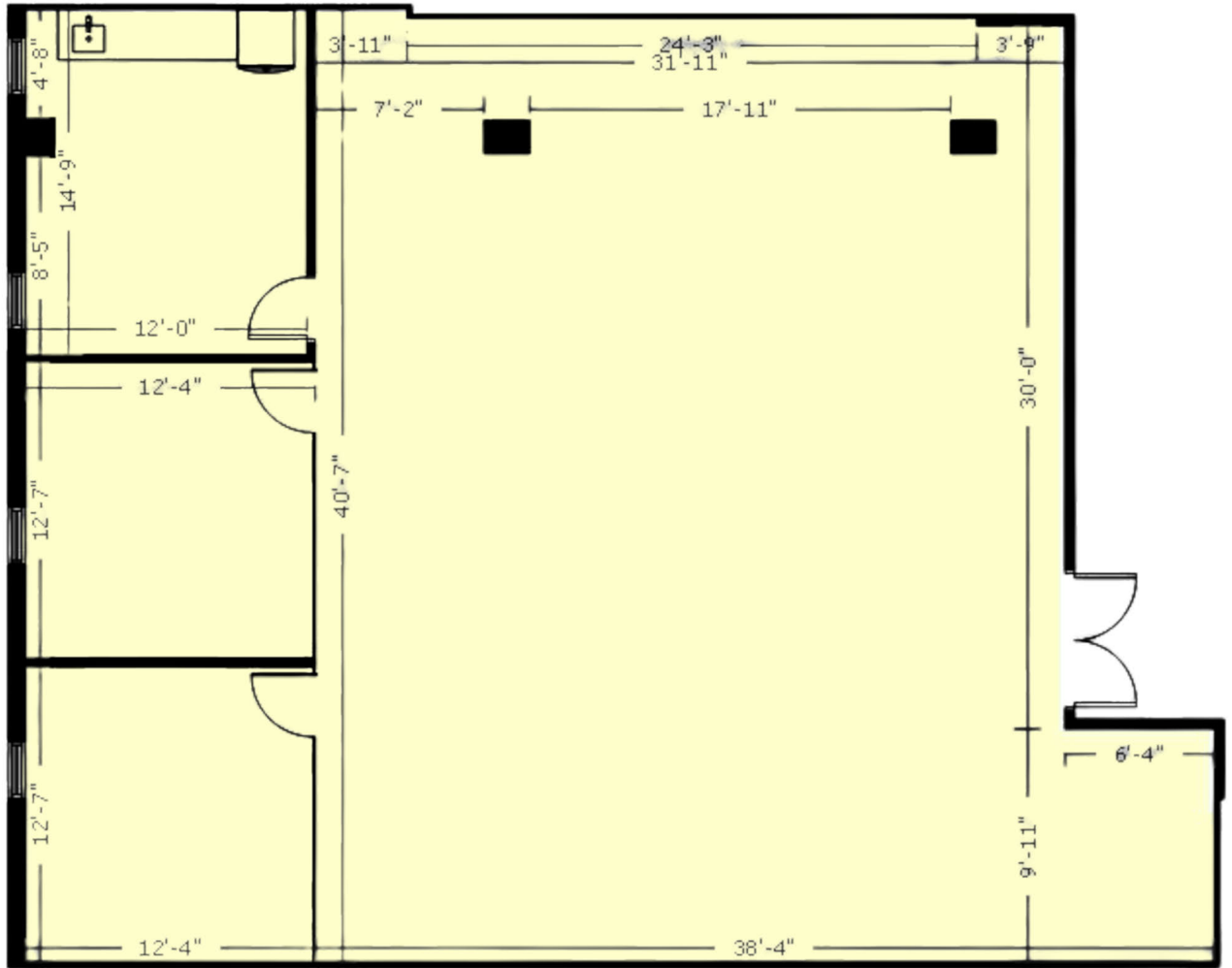
# 1700 66<sup>TH</sup> Street North



**VECTOR**  
COMMERCIAL REAL ESTATE

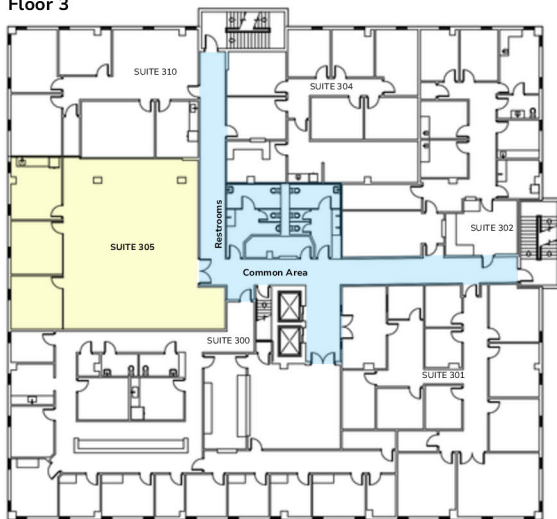


# Suite 305 Floorplan 2,175 SF

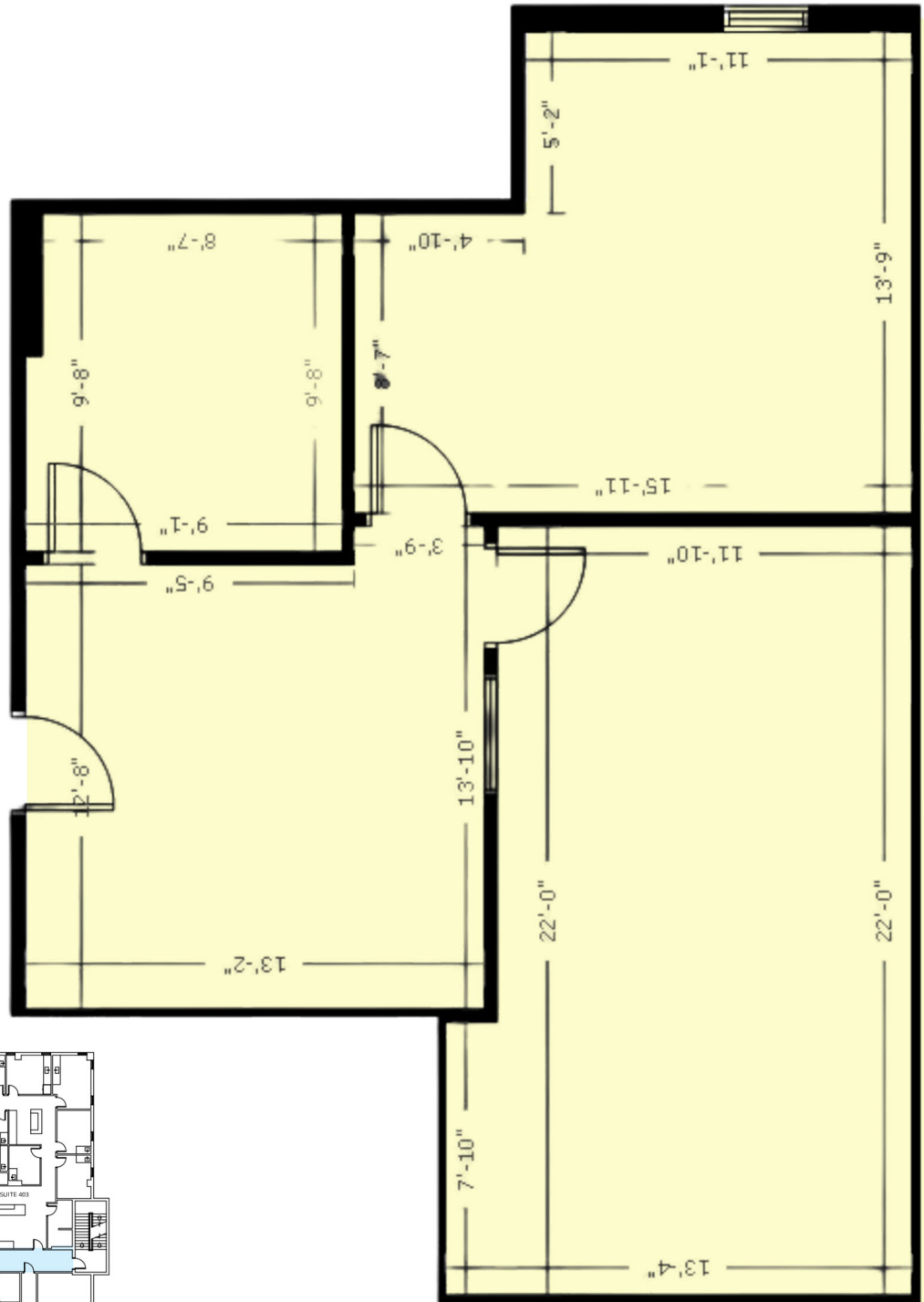


Third Floor, Suite 305 | Scale: 1/8" = 1'-0" (1:96)

Floor 3

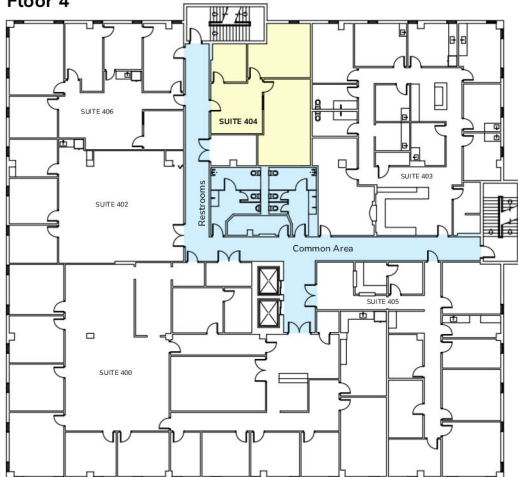


# Suite 404 Floorplan 839 SF

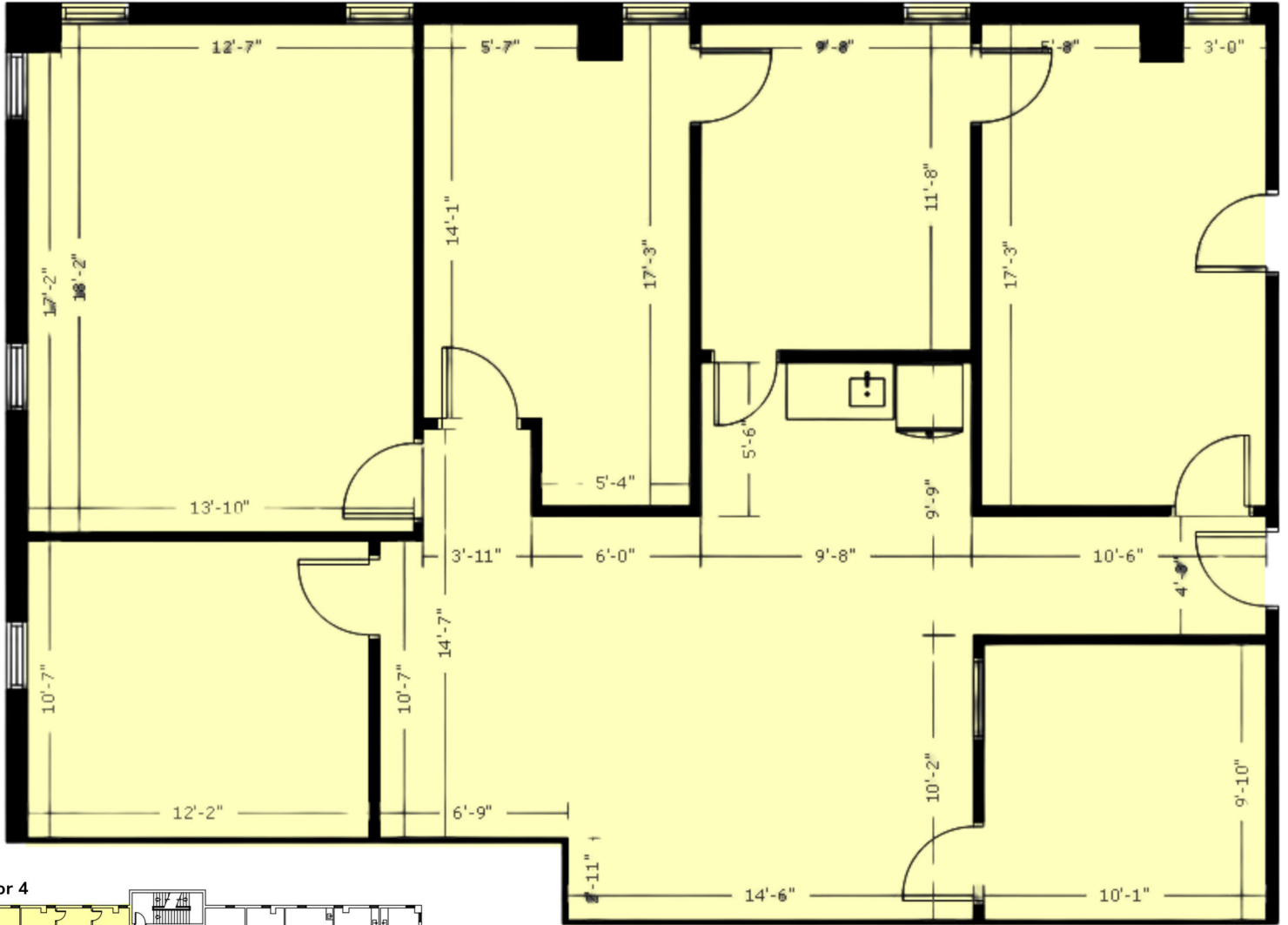


Fourth Floor, Suite 404 | Scale: 3/16" = 1'-0" (1:64)

Floor 4

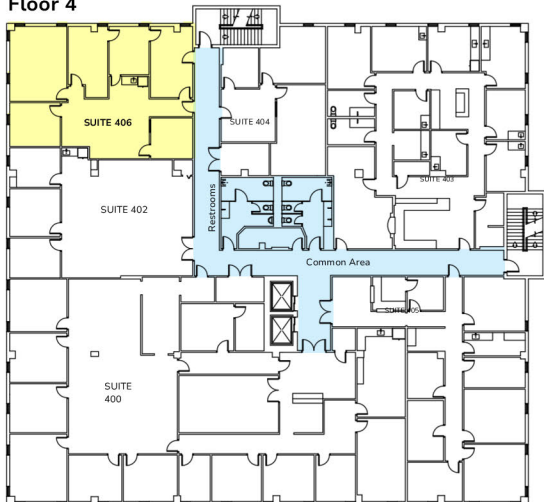


# Suite 406 Floorplan 1,593 SF

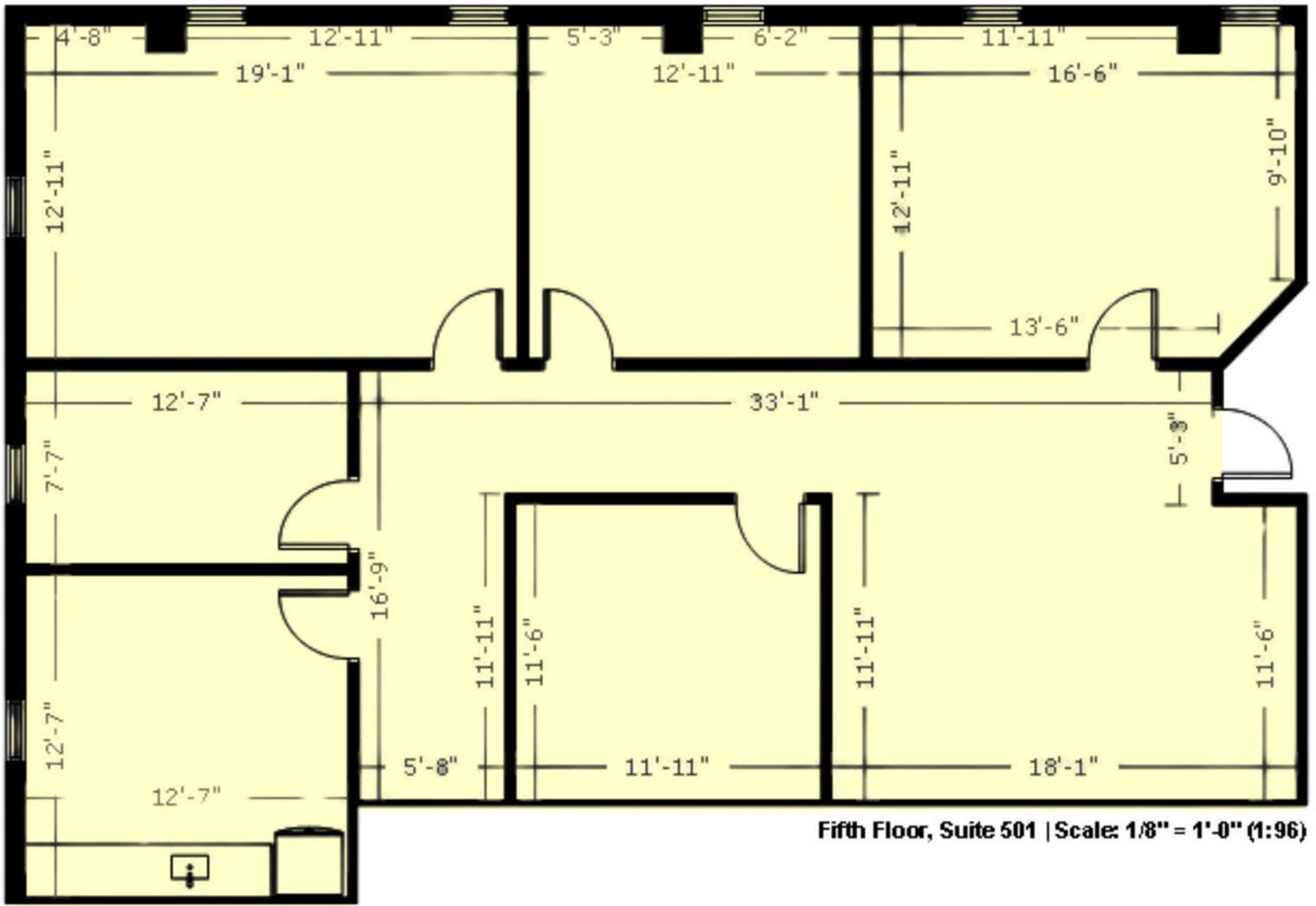


Fourth Floor, Suite 406 | Scale: 3/16" = 1'-0" (1:64)

Floor 4

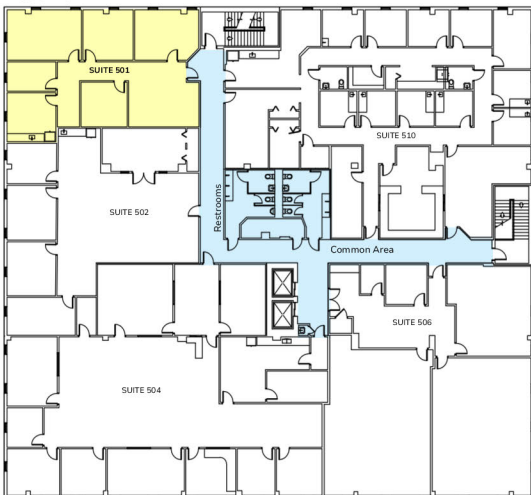


# Suite 501 Floorplan 1,742 SF

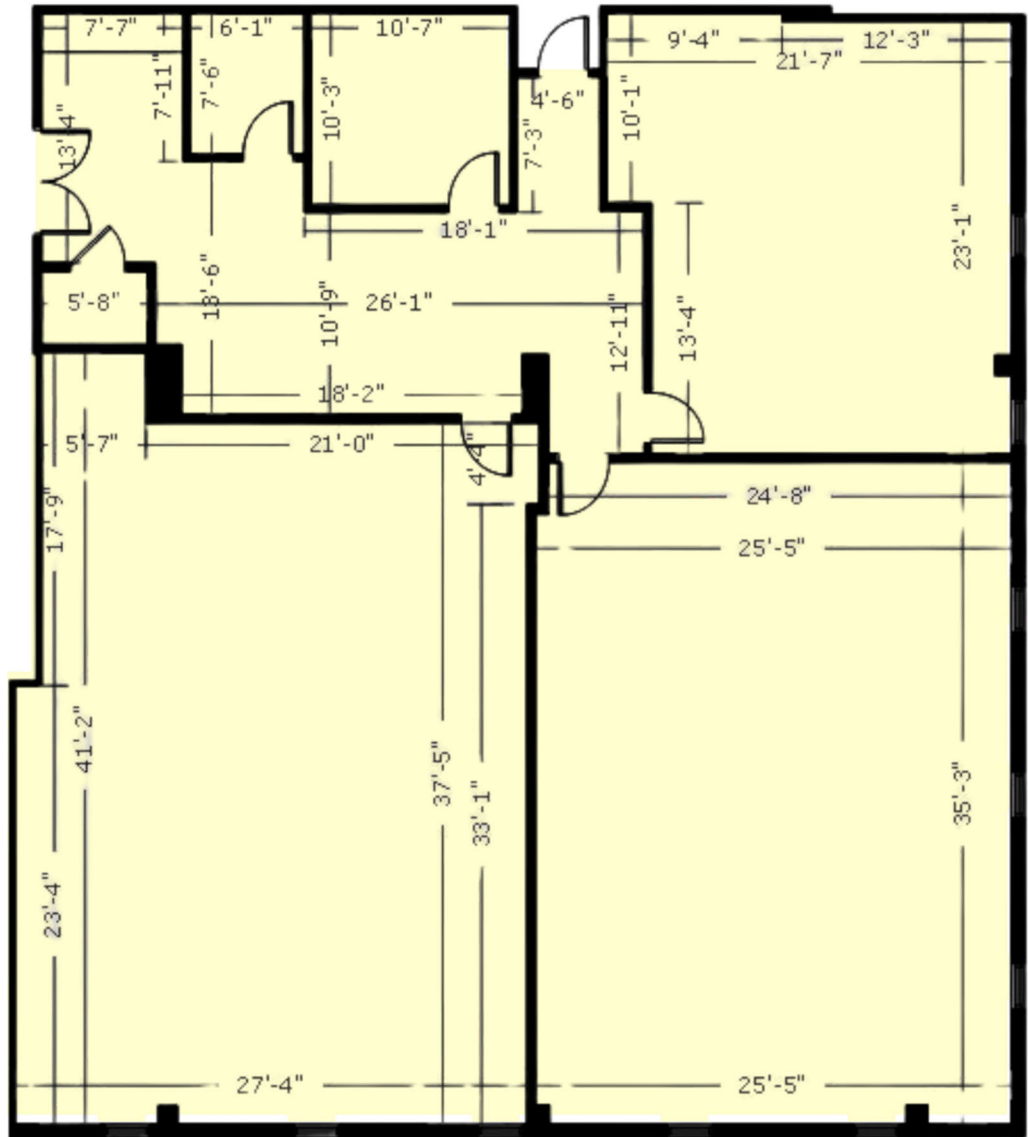


Fifth Floor, Suite 501 | Scale: 1/8" = 1'-0" (1:96)

Floor 5



# Suite 506 Floorplan 3,557 SF



Fifth Floor, Suite 506 | Scale: 3/32" = 1'-0" (1:128)

Floor 5

